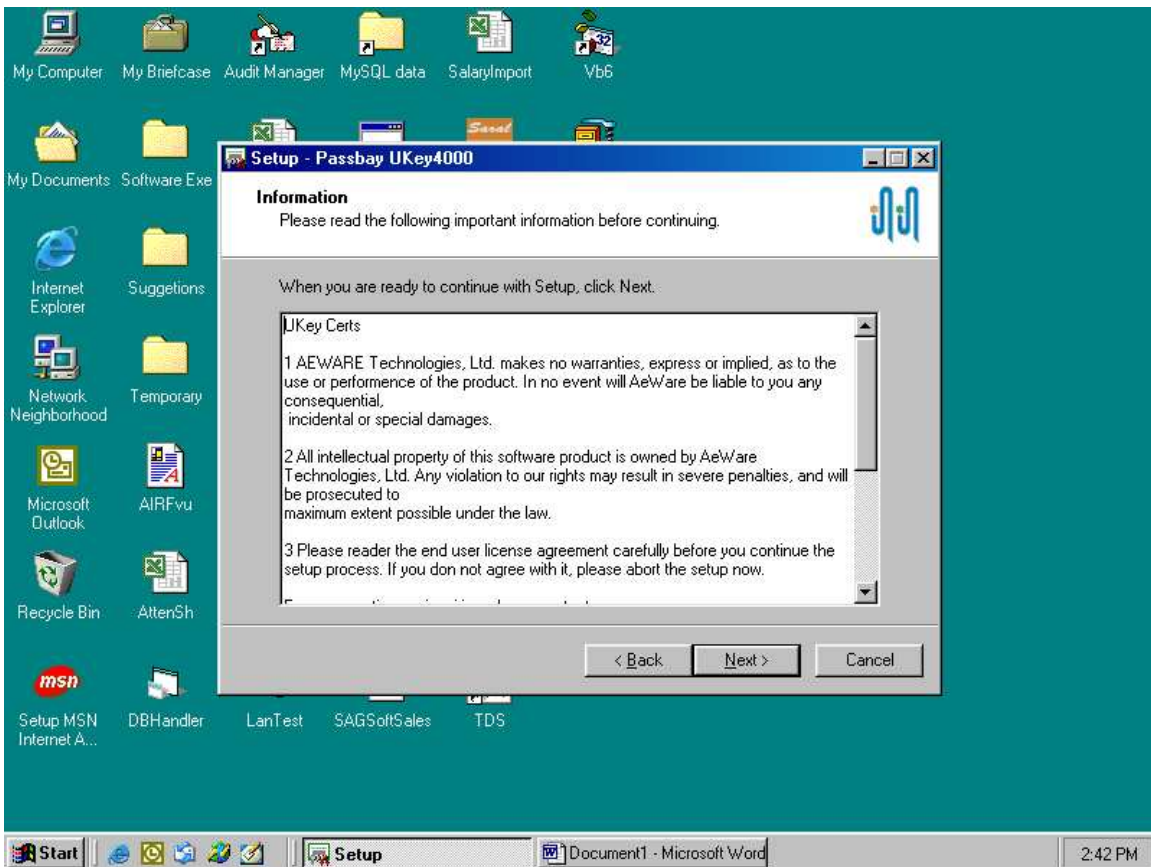
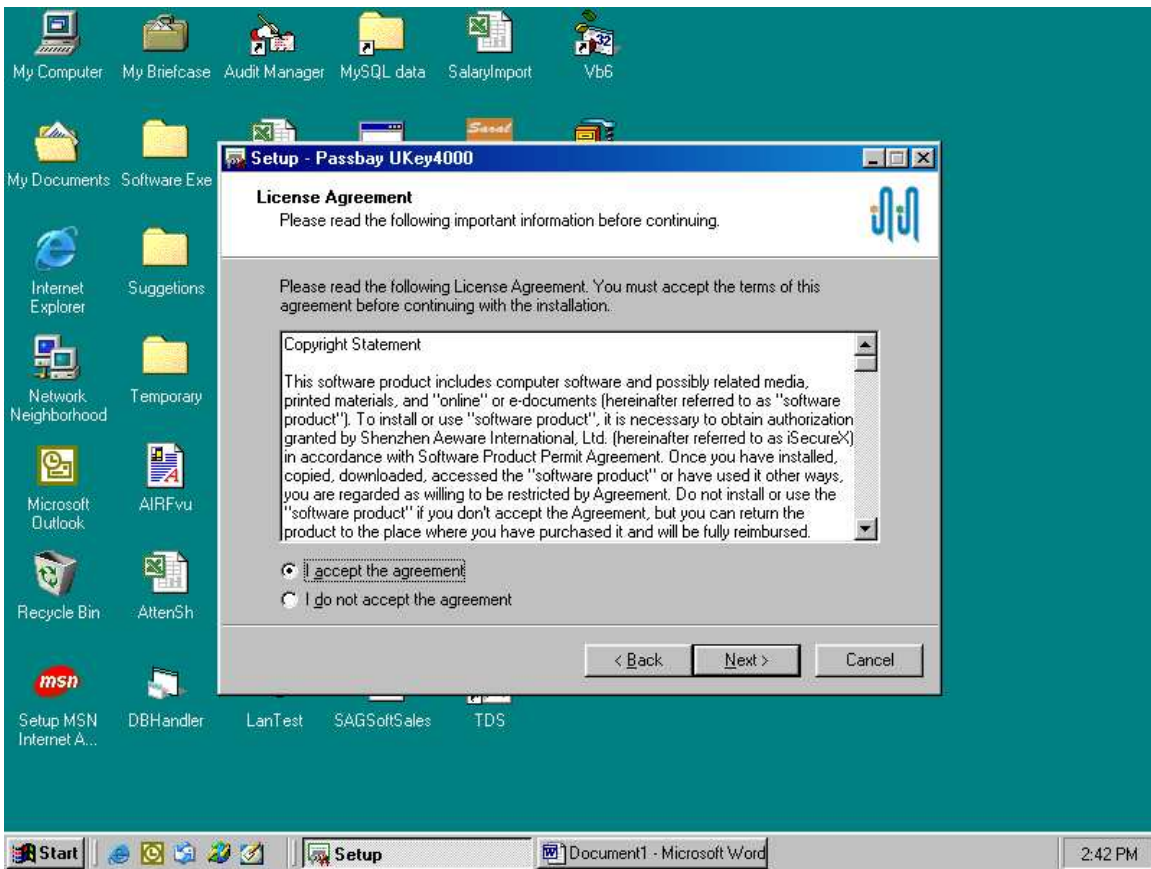


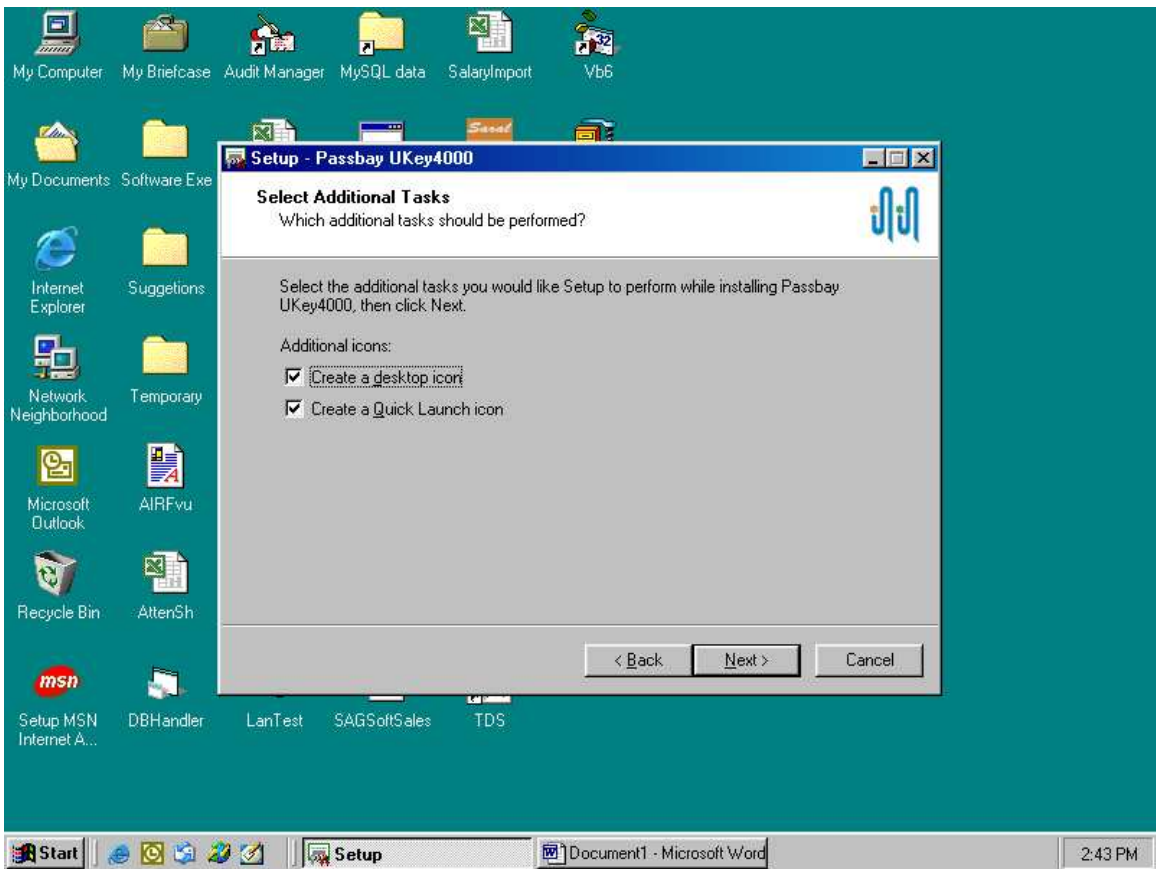
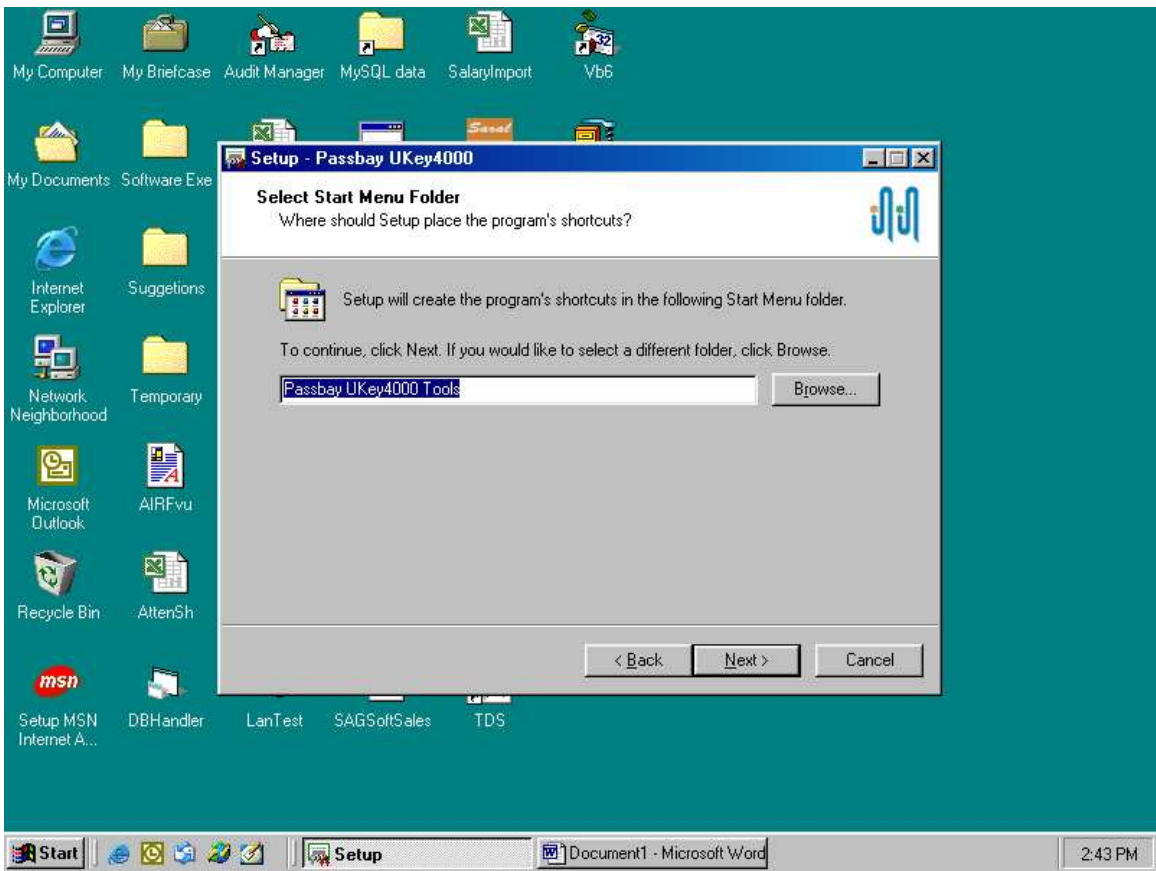
Instructions :

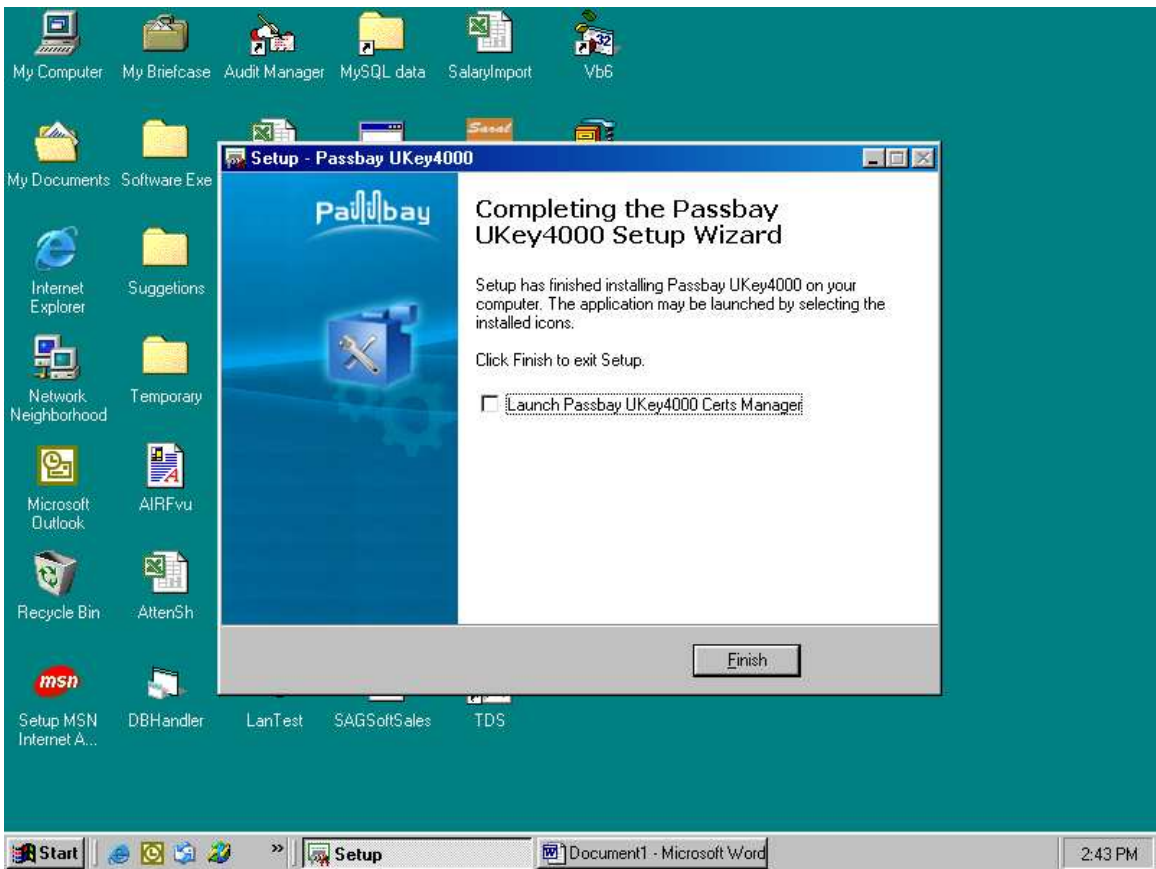
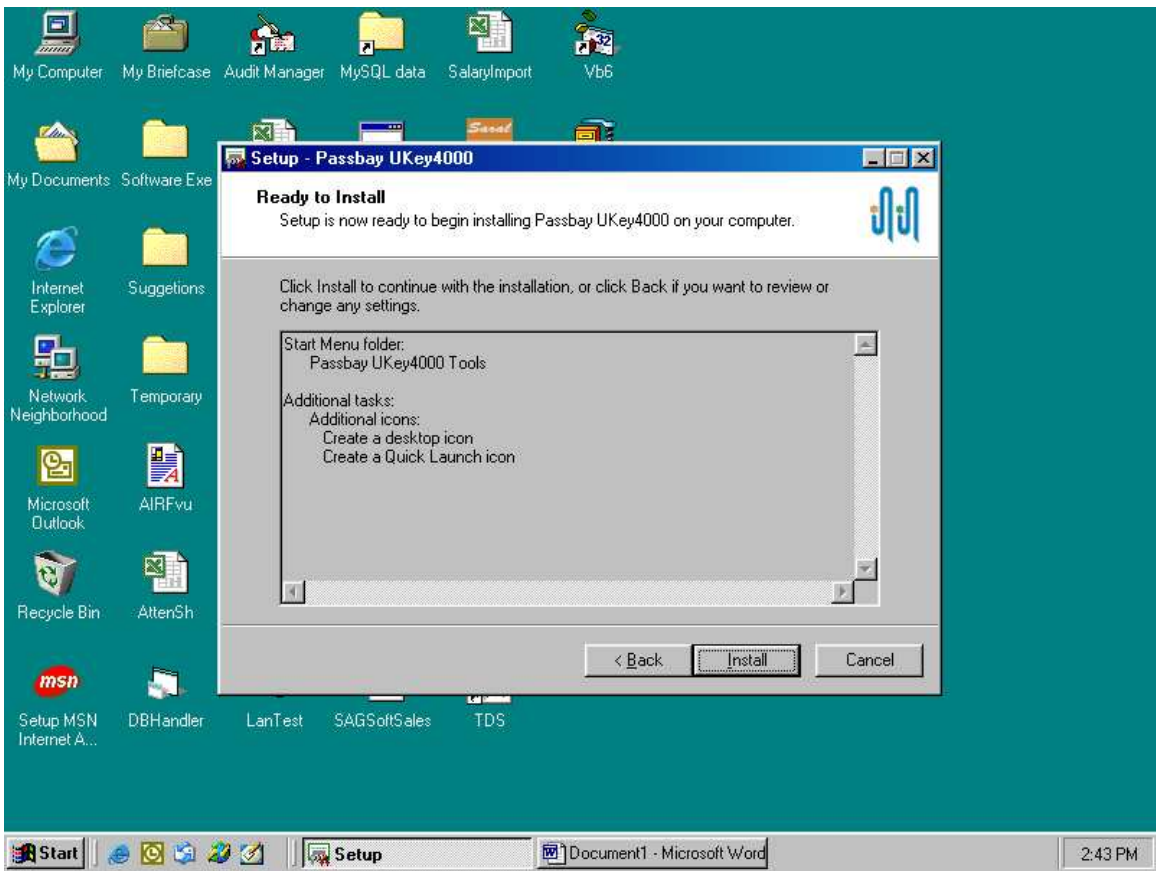
- A. When installing UKey Driver, USB Token must be plugged off or not in USB Port.
- B. When you install UKey Latest Driver then First You uninstall the older and restart the Computer, after restarting install new.

1. Ukey Driver Installation









Note : After Click on Finish. Insert USB Token in USB Port. If there is a message “Found New Hardware” and the Installation Wizard appears on Screen then you complete the Installation Process. After that you double click on the “**UKey4000 Certs Manager**” Icon on Desktop. If it shows a Window named ‘Passbay PIN’ then Ok otherwise you Plug-off the Token and re put the Token in USB Port.